



Mora concept

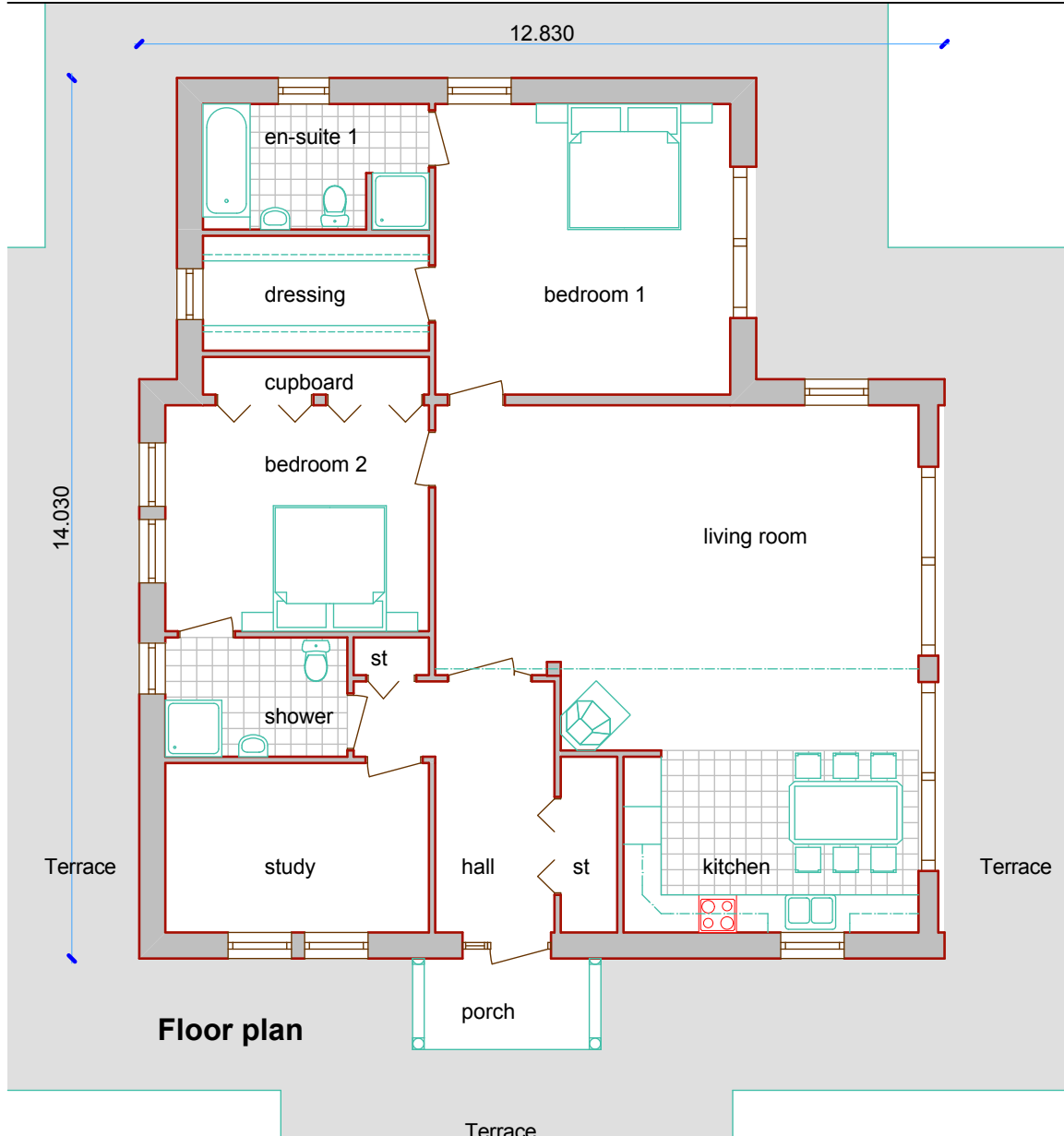
gross external area 160 sqm / 1719 sq ft
gross internal area 141 sqm / 1516 sq ft

Overall width 12.73 m / 41' 9"
Overall depth 13.93 m / 45' 8"

- Practical Space efficient design
- Easy level access inside and out
- Open plan living space
- Vaulted ceiling through the main living area creating a great feeling of space

This single storey home was created for a family whose design brief was for an open plan layout with easy level access for all to enjoy the outside space. The internal design incorporated a hydrotherapy pool.

Mora Concept



Ground floor	metric		imperial	
Hall	1.900	x 4.000	6' 3"	x 13' 1"
Study	4.200	x 2.700	13' 9"	x 8' 10"
Shower	2.900	x 1.900	9' 6"	x 6' 3"
Bedroom 2	4.200	x 3.600	13' 9"	x 11' 10"
Bedroom 1	4.700	x 4.630	15' 5"	x 15' 2"
Dressing	3.600	x 1.830	11' 10"	x 6'
En-suite 1	3.600	x 2.000	11' 10"	x 6' 7"
Living room	7.700	x 4.300	25' 3"	x 14' 1"
Kitchen	4.700	x 4.100	15' 5"	x 13' 5"