



## Salen concept

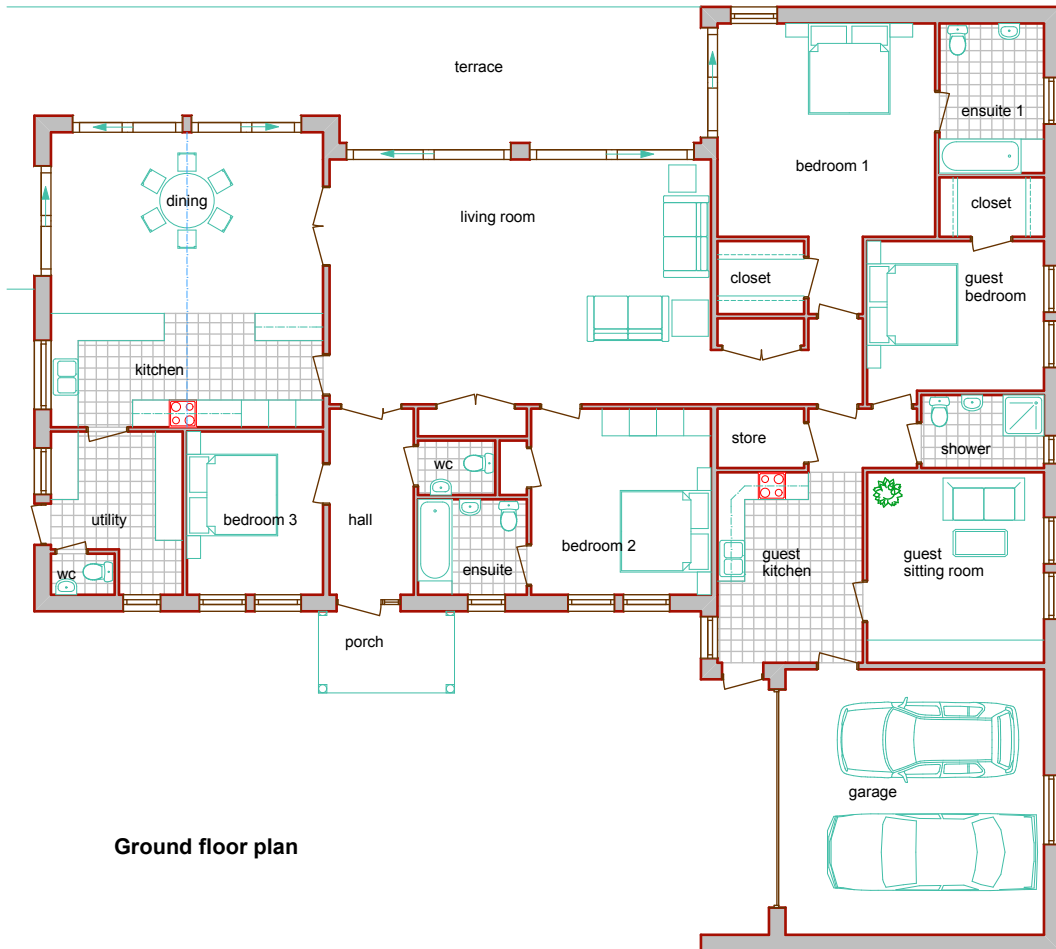
gross external area 313 sqm / 3365 sq ft  
gross internal area 280 sqm / 3019 sq ft

Overall width 22.63 m / 74' 3"  
Overall depth 20.83 m / 68' 4"

- 4/6 bedrooms
- Single storey
- Vaulted living space
- Granny Annex
- Use of “clever” glass
- Traditional aspect on entrance elevation

With large swathes of glazing overlooking stunning views in Somerset, this single storey house takes full advantage of a southerly aspect. Including a granny annex to the side, it has ample accommodation for family and relatives. Now over 10 years old, yet still contemporary, this house has inspired many similar designs. To control solar gain with large expanses of glass facing south we always provide solar reflective super insulating triple glazing.

# Salen Concept



Ground floor plan

Ground floor	metric	imperial
Hall	1.855 x 4.200	6' 1" x 13' 9"
Bedroom 3	3.000 x 3.600	9' 10" x 11' 10"
Kitchen - dining	6.000 x 6.505	19' 8" x 21' 4"
Utility	2.905 x 3.600	9' 6" x 11' 10"
WC	1.405 x 905	4' 7" x 3'
Living room	8.410 x 5.400	27' 7" x 17' 9"
Cupboard	1.910 x 600	6' 3" x 2'
Bedroom 1	4.800 x 4.705	15' 9" x 15' 5"
Closet	1.910 x 1.610	6' 3" x 5' 3"
Ensuite 1	2.305 x 3.300	7' 7" x 10' 10"
Lobby	2.395 x 1.310	7' 10" x 4' 4"
Guest bedroom	3.900 x 3.300	12' 10" x 10' 10"
Closet	2.305 x 1.310	7' 7" x 4' 4"
Shower	2.705 x 1.610	8' 10" x 5' 3"
Guest kitchen	3.300 x 4.200	10' 6" x 13' 9"
Guest sitting	3.900 x 4.200	12' 10" x 13' 9"
Garage	5.700 x 5.855	18' 8" x 19' 3"
Store	1.910 x 1.310	6' 3" x 4' 4"
Bedroom 2	3.965 x 4.105	13' x 13' 6"
Ensuite	2.400 x 2.105	7' 10" x 6' 11"
Cupboard	600 x 1.200	2' x 3' 11"
Cupboard	2.400 x 610	7' 11" x 2'
WC	1.705 x 1.200	5' 7" x 3' 11"